

## Antwerpen Member (Berchem Formation)

**Unit name:** Antwerpen Member

**Hierarchical unit name:** Berchem Formation

**Type:** Member

**Code:** BcAn

**Author(s):**

- Compiled by: Louwye Stephen, Adriaens Rieko, Deckers Jef, Everaert Stijn, Vandenberghe Noël, Verhaegen Jasper

- Modification of: De Meuter & Laga (1976)

**Alternative names:** /

**Origin of the name:** The origin of the name of the unit is discussed in De Meuter & Laga (1976) and Louwye et al. (2020).

**Status:** Formal

**Date:** 01/05/2022

**How to refer:** Louwye, S., Adriaens, R., Deckers, J., Everaert, S., Vandenberghe, N. & Verhaegen, J., 2023. The Antwerpen Member, 01/09/2023. National Commission for Stratigraphy Belgium. <http://ncs.naturalsciences.be/lithostratigraphy/Antwerpen-Member>

### Characterizing description

The Antwerpen Member consists of dark green to blackish, medium fine-grained, slightly clayey and very glauconitic sand with a mode of  $219 \mu\text{m} \pm 61 \mu\text{m}$ . The dispersed clay content is  $3.7 \pm 2.3\%$  and the D90 of the grain size distribution is  $352 \pm 102 \mu\text{m}$  (De Meuter & Laga, 1976; Verhaegen, 2020). Characteristic are shell layers strongly dominated by *Glycymeris baldii* with a varying thickness. Some of these shell beds can be traced continuously across the entire type area (Deckers & Everaert, 2022). Layers with phosphatic concretions, friable sandstones, bones and shark teeth are present towards the base of the member. No clear basal gravel is present. The glauconite content ranges from 28% to locally as high as 85% and is on average 47%, which is the highest amount in any unit in the Campine Basin (Adriaens, 2015; Adriaens & Vandenberghe, 2020). The Antwerpen Member contains mostly authigenic glauconite (Vandenberghe et al., 2014; Odin & Kreuzer, 1988).

### Type section, type locality, type borehole, type CPT and/or type geophysical borehole

According to De Meuter & Laga (1976), the type locality of the member is the city centre of Antwerp. The original, and now disappeared, type section of the member was described during the excavations works for a fort at Antwerp (Nyst, 1845). Nowadays no permanent outcropping type section for the member exist. The lithology of the member was described in following temporary outcrops in the Antwerpen area (see Figure 0-1 for a synthetic overview):

Antwerpen – Berchem Station AM (De Meuter et al., 1976)

Antwerpen – Borbeeksepoort II BP (De Meuter et al., 1976)

Borgerhout – Stenen Brug I SB (De Meuter et al., 1976), revised by Deckers and Everaert (2022)

Borgerhout – Rivierenhof XI BR (De Meuter et al., 1976) correlated to CPT GEO-07/154-S11 by Deckers and Everaert (2022)

Antwerpen – Kievitstraat II, V, VI AK (De Meuter et al., 1976), revised by Everaert et al. (2020)

Posthofbrug (Louwye et al., 2010) correlated to CPT GEO-68/101-SVII by Deckers and Everaert (2022)

Posthofbrug 2-3 (Hoedemakers & Dufraing, 2018)

Tweelingenstraat (Everaert et al., 2020)

Argenta (Everaert et al., 2020)

Post X (Everaert et al., 2020)

### **Description upper boundary**

In the greater Antwerp area, the member is unconformably covered by the Deurne/Borsbeek members of the Diest Formation (upper Miocene), the Pliocene Kattendijk and/or Lillo formations, reworked Pliocene deposits or the Quaternary (De Meuter et al., 1976). Often, a succession of compact Glycymeris shell beds forms the top of the Antwerpen Member (S3 in Deckers & Everaert, 2022), probably due to its stronger resistance against erosion.

### **Description lower boundary**

The Antwerpen Member rests unconformably on the Kiel Member in the Antwerp area. This boundary displays the geometry of an unconformity, as the upper part of the Kiel Member disappears to the north of Antwerp (Louwye et al., 2000; Everaert et al., 2020). The basal part of the Antwerpen Member has a denser texture due to its finer admixture, with a slightly higher clay and silt content, in contrast to the Kiel Member. This locally gave rise to the development of load casting structures in the base of the Antwerpen Member. Locally, large lithified Ophiomorpha burrows are concentrated just below the base of the Antwerpen Member.

### **Thickness**

Based on (sometimes lithostratigraphically revised) outcrop drawings by De Meuter et al. (1976) and correlations with nearby CPTs, the Antwerpen Member has an approximate thickness of 7 m in the type area.

### **Occurrence**

Deposits coeval with the Antwerpen Member are recorded in several boreholes north (Antwerp Campine area) and east (Campine area) of the type area reaching a maximum thickness of c. 5 to 10 m (Louwye et al., 2020).

### **Regional correlations**

/

### **Age**

The planktonic foraminifers from the Antwerpen Member indicate the presence of the NPF12 Globogineroides trilobus Zone to the NPF13 Globorotalia praescitula Zone defined by Spiegler et al. (1988), and point towards a late Burdigalian to Langhian age. The benthic foraminifera from the Antwerpen Member are indicative for the mid-Miocene Uvigerina tenuipustulata – Elphidium inflatum Assemblage Zone (De Meuter & Laga, 1976), while the calcareous nannoplankton proposes a correlation with the late Burdigalian to Langhian NN4 Zone (Martini & Müller, 1973). Dinoflagellate cyst analysis demonstrates the presence of the Labyrinthidium truncatum Zone, the Unipontidium aquaeductus Zone and the Achomosphaera andalousiensis Zone and suggests

---

deposition between 15.97 Ma and 12.8 Ma (Langhian – mid-Serravallian) (Louwye et al., 2000) (Figure 0-2). The radiometric datings of glauconites from the Antwerpen Member give a K-Ar age of 20 Ma and a Rb-Sr age of 18.5 Ma to 21.5 Ma (Odin & Kreuzer, 1988), i.e. a latest Aquitanian to mid-Burdigalian age. Vandenberghe et al. (2014) and Adriaens (2015) attribute the diverging age assessment to the presence of reworked glauconite pellets.

### Dataset

Data in this LIS are part of the [DOV-Neogene data collection](#), including links to the GSB-collection data sheets.

Subset of the lower and middle Miocene: <https://www.dov.vlaanderen.be/data/opdracht/2020-022192>

### References

Adriaens, R., 2015. Neogene and Quaternary clay minerals in the southern North Sea. Unpublished Ph.D. Thesis, KU Leuven, Leuven, 272 p.

Adriaens, R. & Vandenberghe, N., 2020. Quantitative clay mineralogy as a tool for lithostratigraphy of Neogene Formations in Belgium: a reconnaissance study. *Geologica Belgica* 23/3-4, 365-378. <https://doi.org/10.20341/gb.2020.018>

De Meuter, F. & Laga, P., 1976. Lithostratigraphy and biostratigraphy based on benthonic foraminifera of the Neogene deposits in Northern Belgium. *Bulletin Belgische Vereniging voor Geologie/Bulletin de la Société belge de Géologie*, 85, 133–152.

De Meuter, F., Wouters, K. & Ringele, A., 1976. Lithostratigraphy from temporary outcrops in the Antwerpen City area. *Professional Paper of the Geological Survey of Belgium*, 3, 1–19.

Deckers, J. & Everaert, S., 2022. Distinguishing the Miocene Kiel and Antwerpen Members (Berchem Formation) and their characteristic horizons using Cone Penetration Tests in Antwerp (northern Belgium). *Geological Journal*. <https://doi.org/10.1002/gj.4384>

Everaert, S., Munsterman, D., De Schutter, P., Bosselaers, M., Van Boeckel, J., Cleemput, G. & Bor, T., 2020. Stratigraphy and palaeontology of the lower Miocene Kiel Sand Member (Berchem Formation) in temporary exposures in Antwerp (northern Belgium). *Geologica Belgica*, 23/3-4, 167-198. <https://doi.org/10.20341/gb.2020.025>

Hoedemakers, K. & Dufraing, L., 2018. Een profiel bij Posthofbrug (Antwerpen). *Afzettingen WTKG* 39, 3, 65-80.

Louwye, S., De Coninck, J. & Verniers, J., 2000. Shallow marine Lower and Middle Miocene deposits at the southern margin of the North Sea Basin (northern Belgium): dinoflagellate cyst biostratigraphy and depositional history. *Geological Magazine*, 137, 381–393. <https://doi.org/10.1017/s0016756800004258>

Louwye, S., Deckers, J., Verhaegen, J., Adriaens, R. & Vandenberghe N., 2020. A review of the lower and middle Miocene of northern Belgium. *Geologica Belgica*, 23/3-4: 137-156. <https://doi.org/10.20341/gb.2020.010>

Louwye, S., Marquet, R., Bosselaers, M. & Lambert, O., 2010. Stratigraphy of an Early-Middle Miocene sequence near Antwerp in northern Belgium (southern North Sea basin). *Geologica Belgica*, 13/3, 269-284.

Martini, E. & Müller, C., 1973. Nannoplankton-Gemeinschaften im Miozän und Pliozän des Nordseebeckens. *Neues Jahrbuch für Geologie und Paläontologie, Monatshefte*, 9, 555–564.

Nyst, P.-H., 1845. Description des coquilles et des polypiers fossiles des terrains tertiaires de la Belgique. *Mémoires couronnés et mémoires des savants étrangers de l'Académie royale des Sciences et Belles-Lettres de Bruxelles*, 17, 1–697.

Odin, G.S. & Kreuzer, H., 1988. Geochronology: some geochronological calibrations points for lithostratigraphic units. In Vinken, R. (ed.), *The Northwest European Tertiary Basin*. *Geologisches Jahrbuch, Reihe A*, 100, 403–410.

Spiegler, D., Gramann, F. & Von Daniels, C.H., 1988. Planktonic foraminifera the description of the interregional zonation (NPF zones). In Vinken, R. (ed.), *The Northwest European Tertiary Basin*. *Geologisches Jahrbuch, Reihe A*, 100, 152–160.

Vandenbergh, N., Harris, W.B., Wampler, J.M., Houthuys, R., Louwye, S., Adriaens, R., Vos, K., Lanckacker, T., Matthijs, J., Deckers, J., Verhaegen, J., Laga, P., Westerhoff, W. & Munsterman, D., 2014. The implications of K-Ar glauconite dating of the Diest Formation on the paleogeography of the Upper Miocene in Belgium. *Geologica Belgica*, 17, 161–174.

Verhaegen, J., 2020. Stratigraphic discriminatory potential of heavy mineral analysis for the Neogene sediments of Belgium. *Geologica Belgica*, 23/3-4, 379-398. <https://doi.org/10.20341/gb.2020.003>

## Annexes

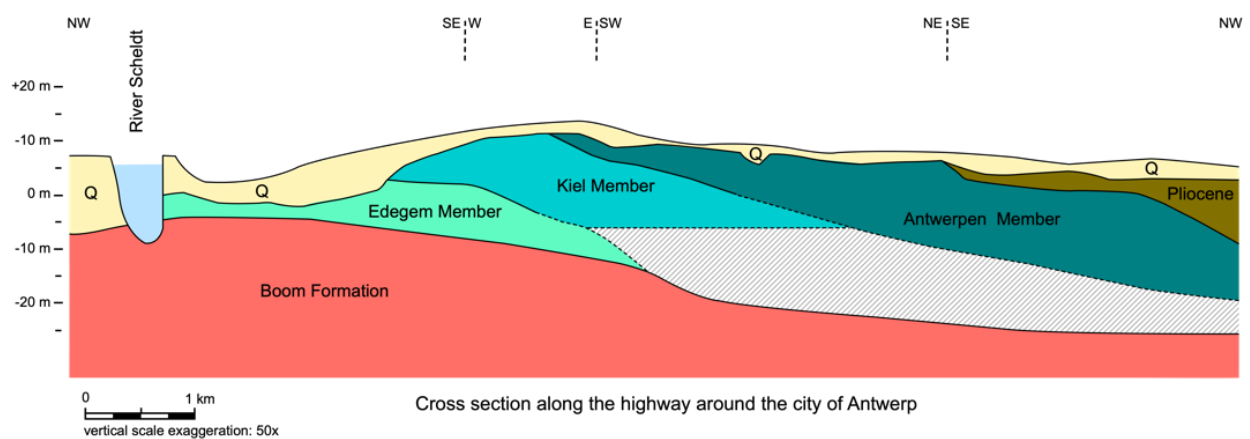


Figure 0-1. Geological cross-section of the Berchem formation in the type area. See Louwye et al. (2020) for more information.

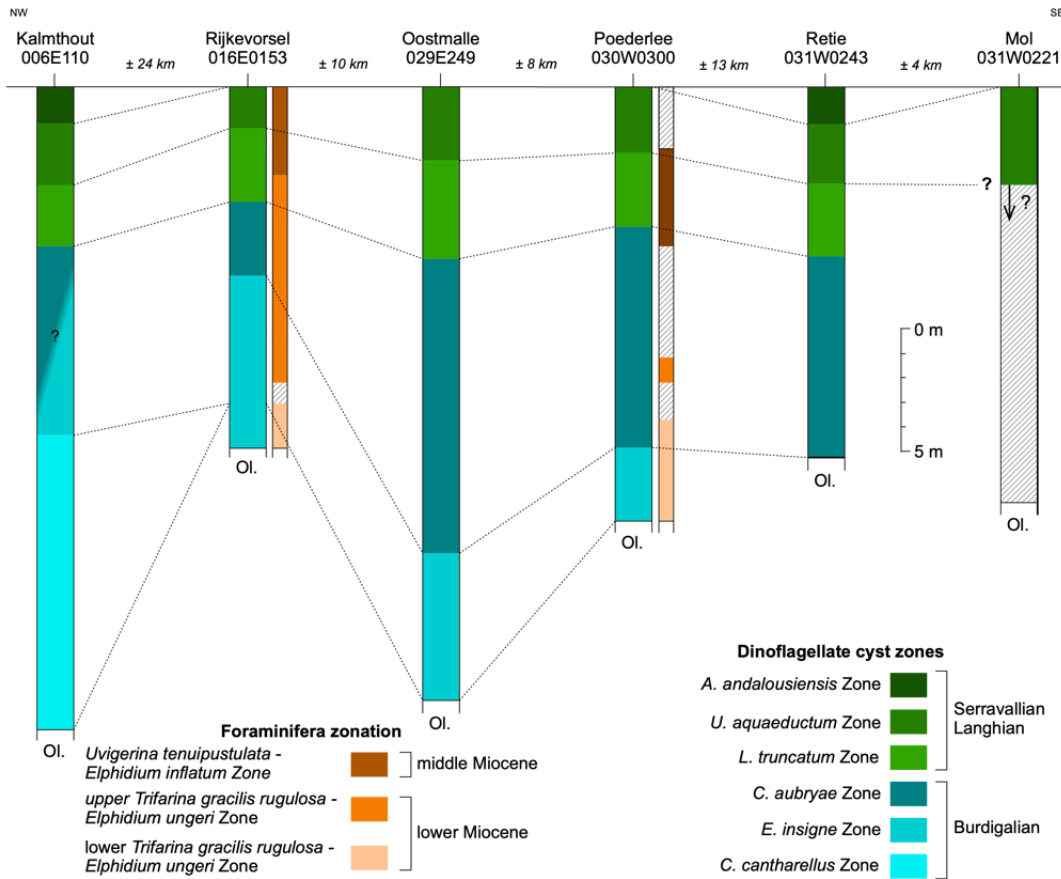


Figure 0-2 Distribution of lower and middle Miocene deposits in the Antwerp Campine area. See Louwye et al. (2020) for more information.