

**Locatie : Rijkevorsel**

BGD-nummer : 007E0200

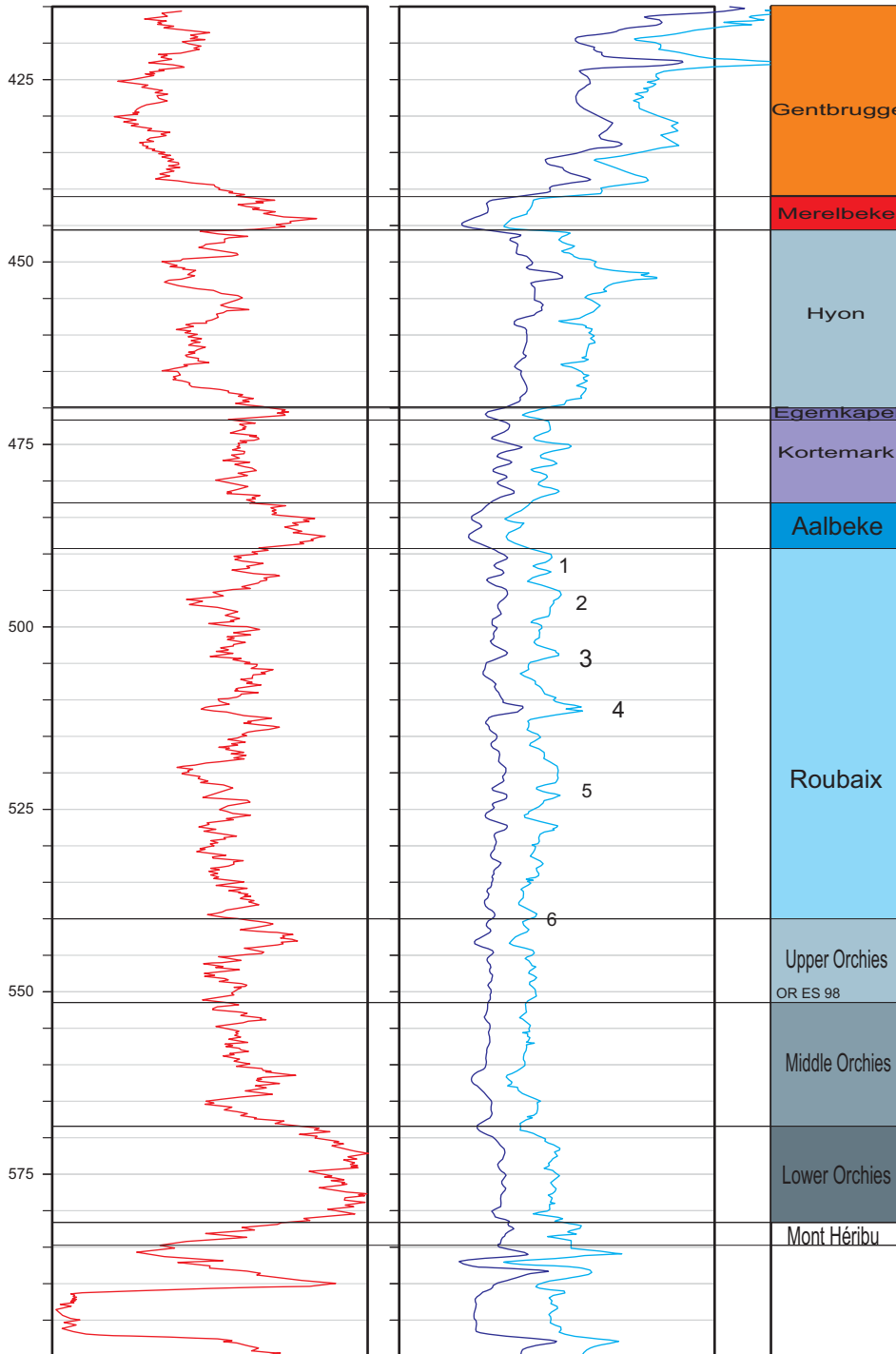
X (Lambert coördinaat) :

Y (Lambert coördinaat) :

Z (m TAW) :

Diepte : m

0      Gamma-ray (cps)      50      0      LN 100 / 200 cm (Ohmm)      300      Stratigrafie  
0      SN 20 / 40 cm (Ohmm)      300



**Locatie : Knokke**

BGD-nummer : 011E0138

X (Lambert coördinaat) :

Y (Lambert coördinaat) :

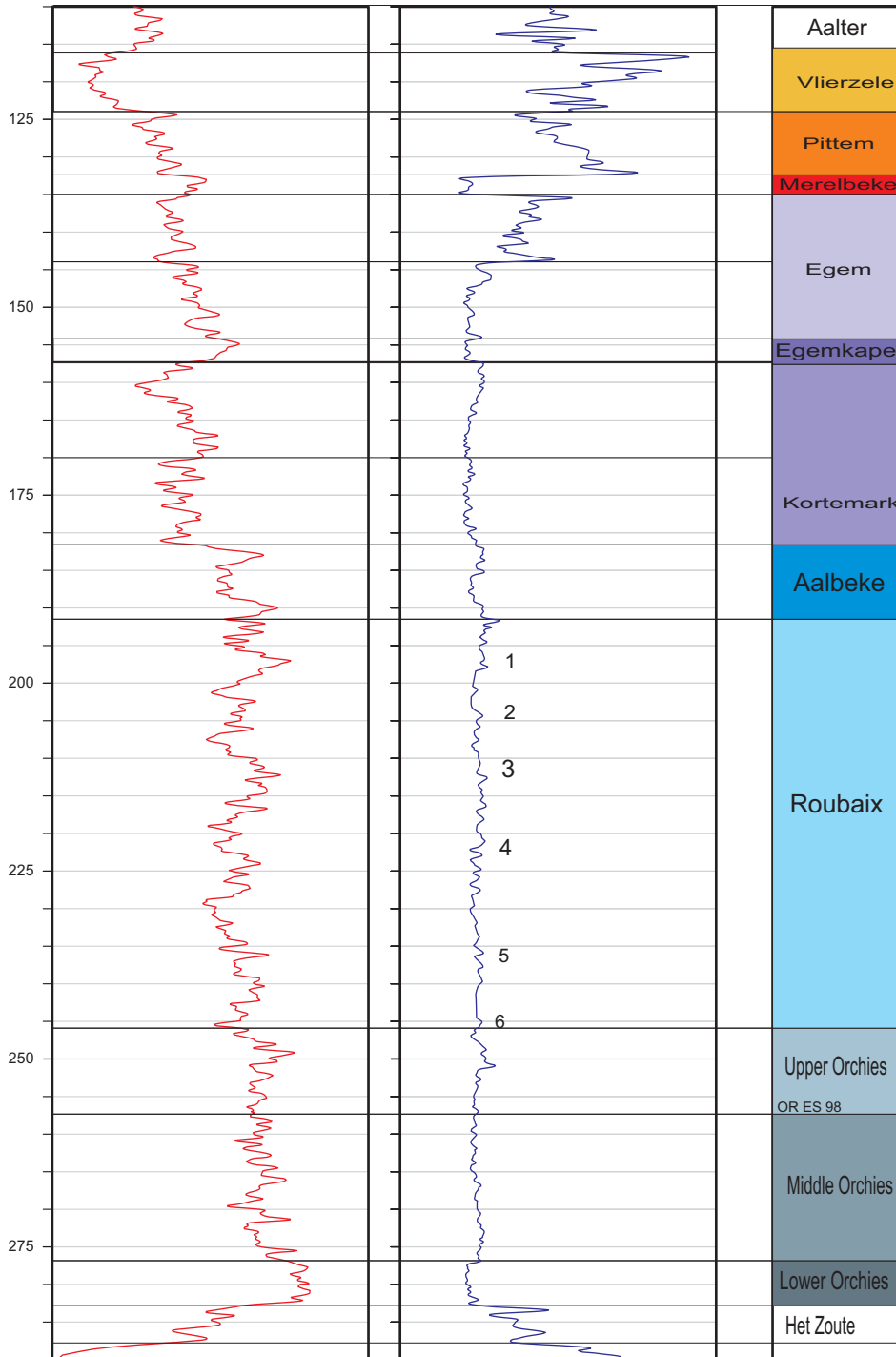
Z (m TAW) :

Diepte : m

## SFLU

0 Gamma-ray (cps) 50

Stratigrafie



**Locatie : Kallo**

BGD-nummer : 014E0355

X (Lambert coördinaat) :

Y (Lambert coördinaat) :

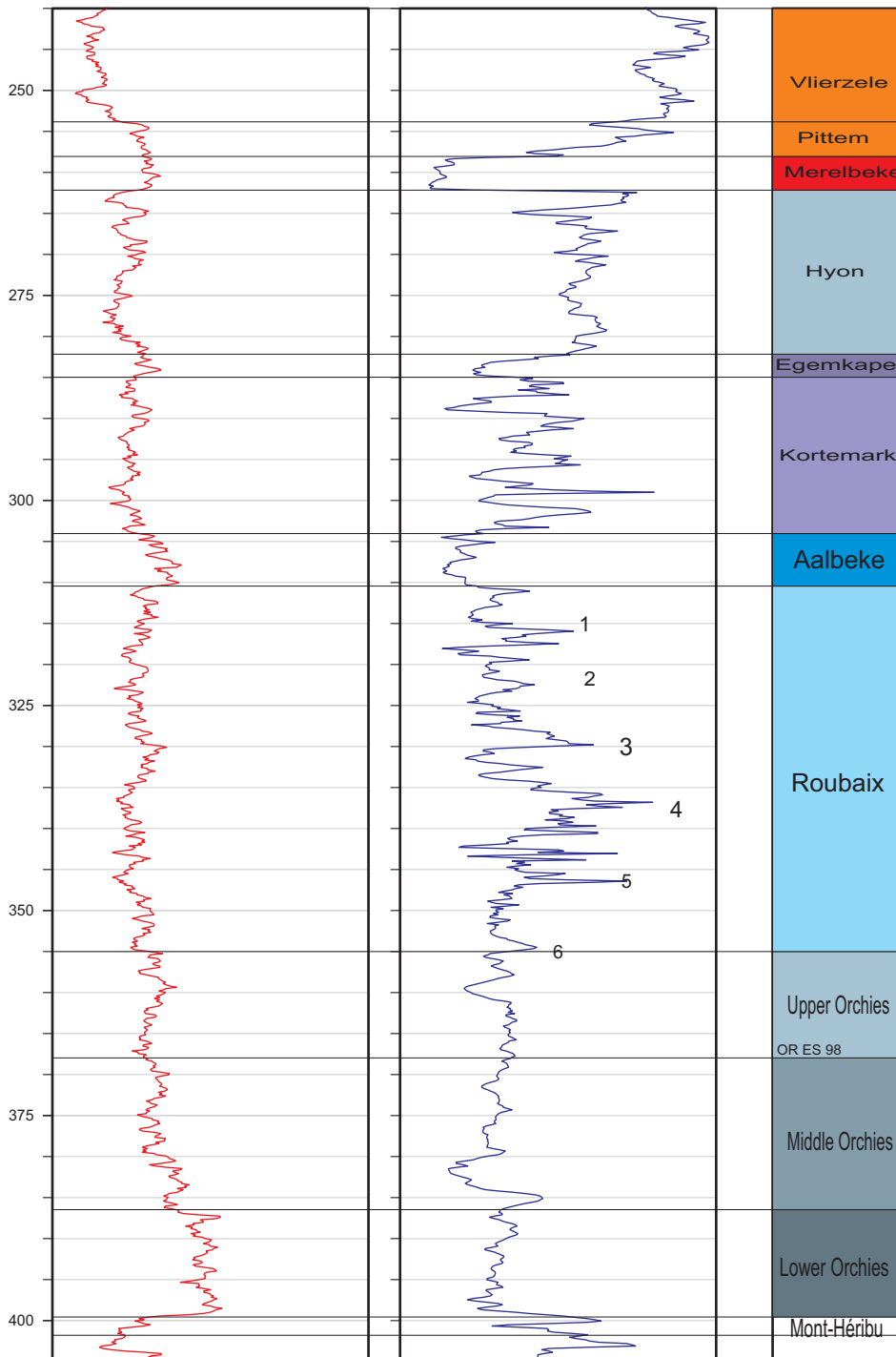
Z (m TAW) :

Diepte : m

0 Gamma-ray (cps) 50

At20. (1-4.5)

Stratigrafie



**Locatie : Merksplas**

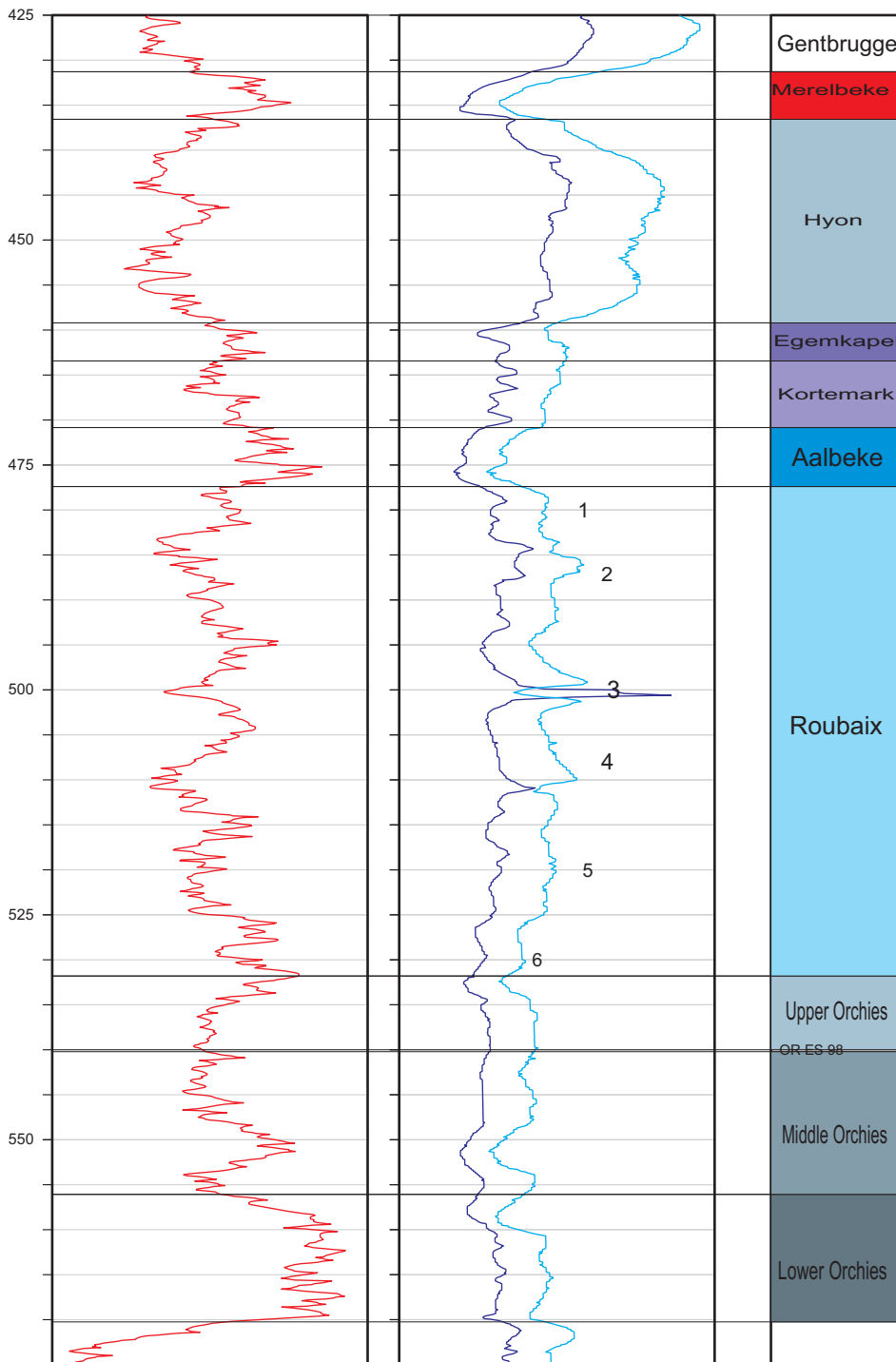
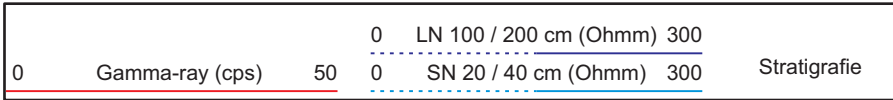
BGD-nummer : 017W0280

X (Lambert coördinaat) :

Y (Lambert coördinaat) :

Z (m TAW) :

Diepte : m



**Locatie : Brugge**

BGD-nummer : 023W0454

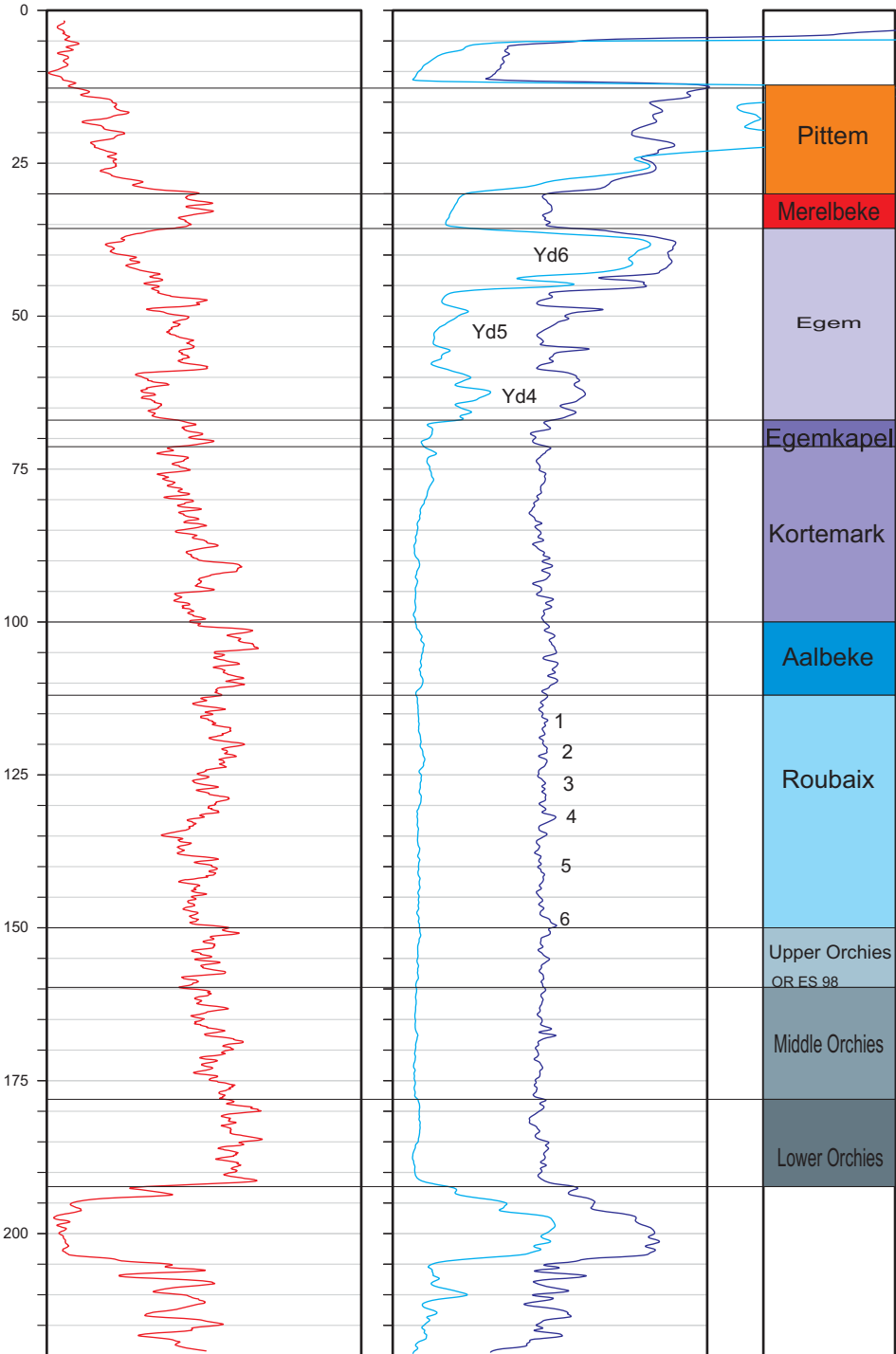
X (Lambert coördinaat) :

Y (Lambert coördinaat) :

Z (m TAW) :

Diepte : m

0      Gamma-ray (cps)      50      0      LN 100 / 200 cm (Ohmm)      300  
0      SN 20 / 40 cm (Ohmm)      300      Stratigrafie



**Locatie : Mol SCK15**

BGD-nummer : 031W0237

X (Lambert coördinaat) :

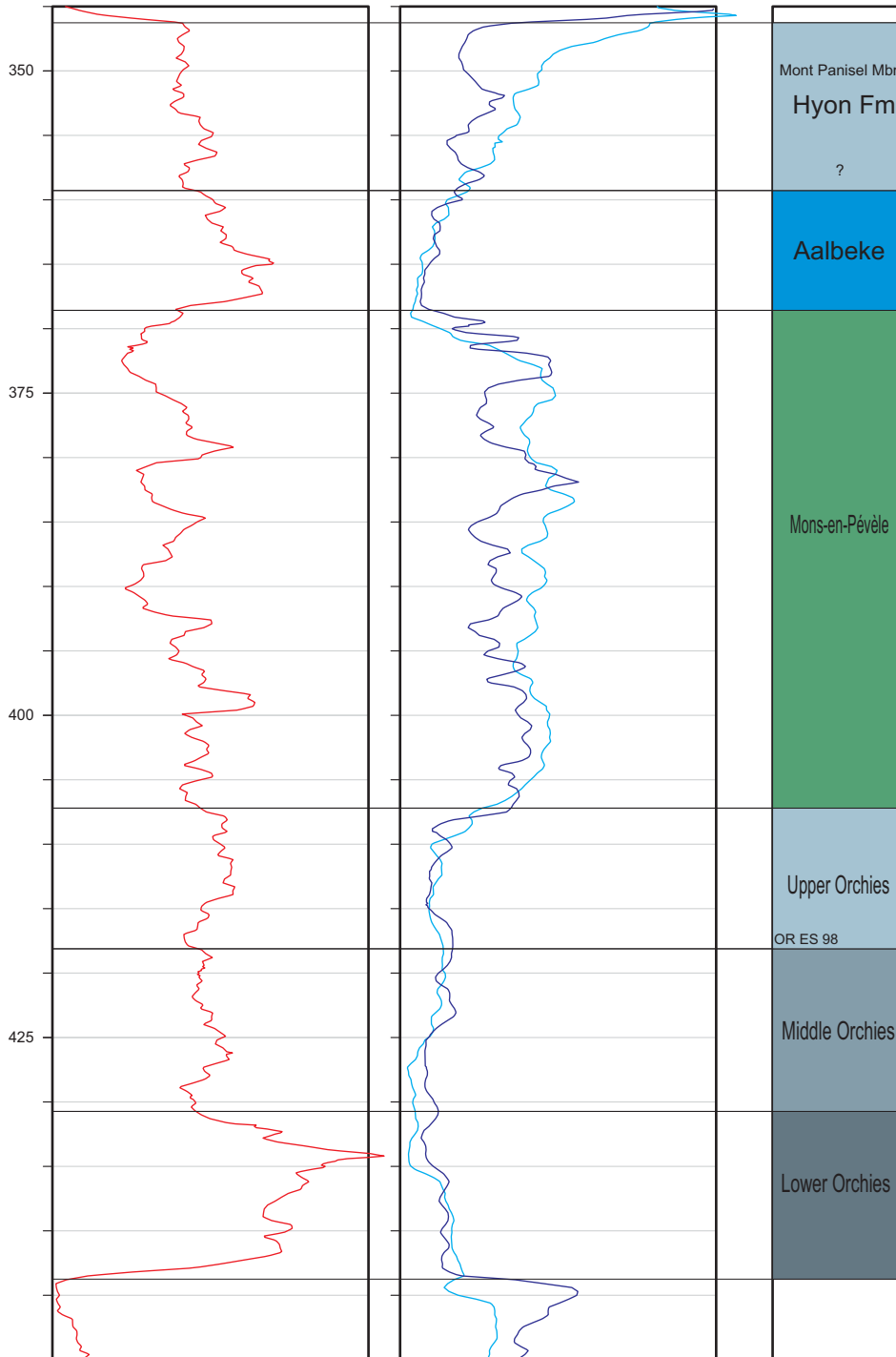
Y (Lambert coördinaat) :

Z (m TAW) :

Diepte : m

0      Gamma-ray (cps)      50      0      LN 100 / 200 cm (Ohmm)      300      Stratigrafie

0      SN 20 / 40 cm (Ohmm)      300



**Locatie : Hijfte**

BGD-nummer : 040E0373

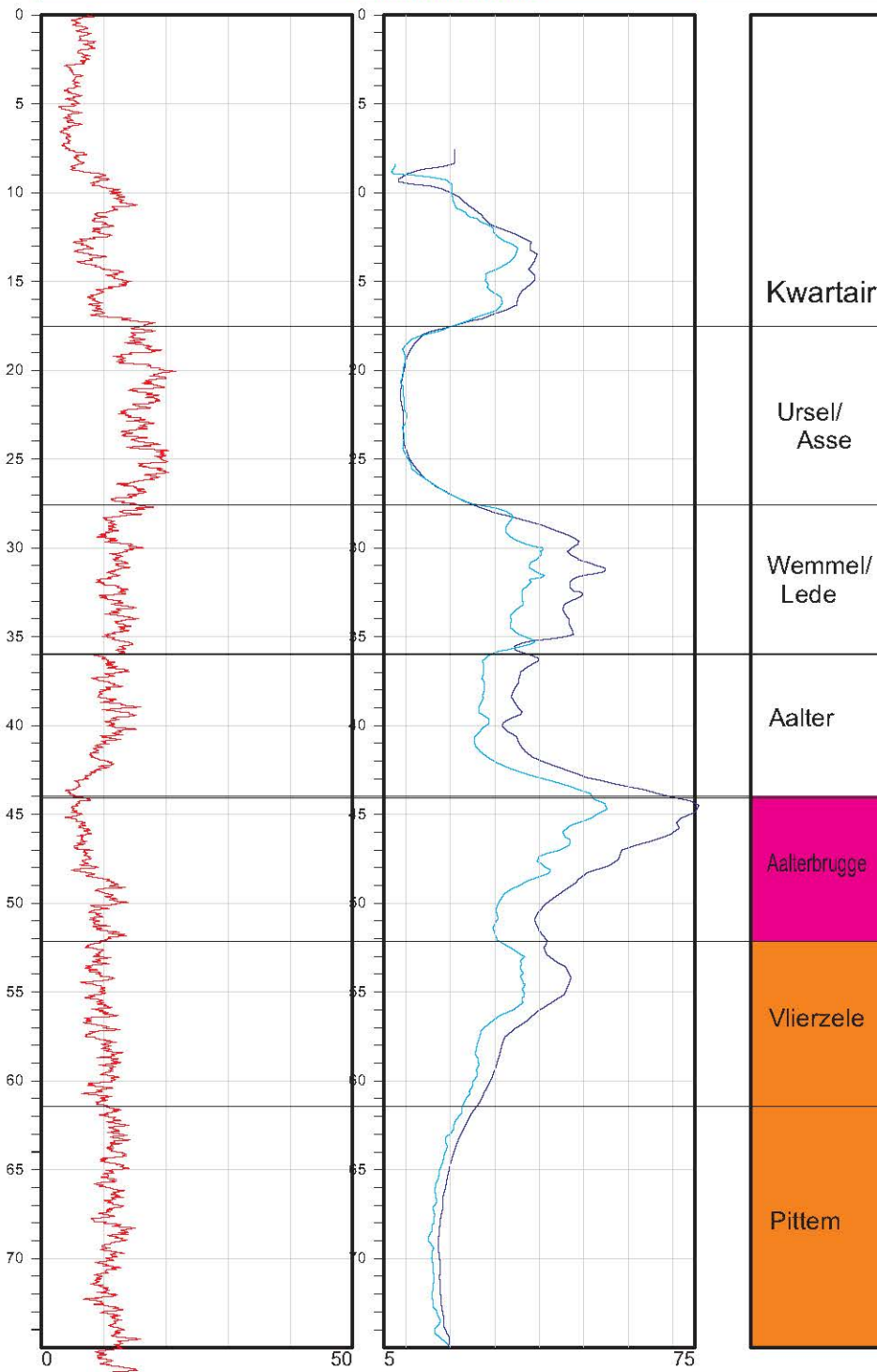
X (Lambert coördinaat) :

Y (Lambert coördinaat) :

Z (m TAW) :

Diepte : m

0      Gamma-ray (cps)      50      0      LN 100 / 200 cm (Ohmm)      75      Stratigrafie  
0      SN 20 / 40 cm (Ohmm)      75



**Locatie : Torhout**

BGD-nummer : 052E0195

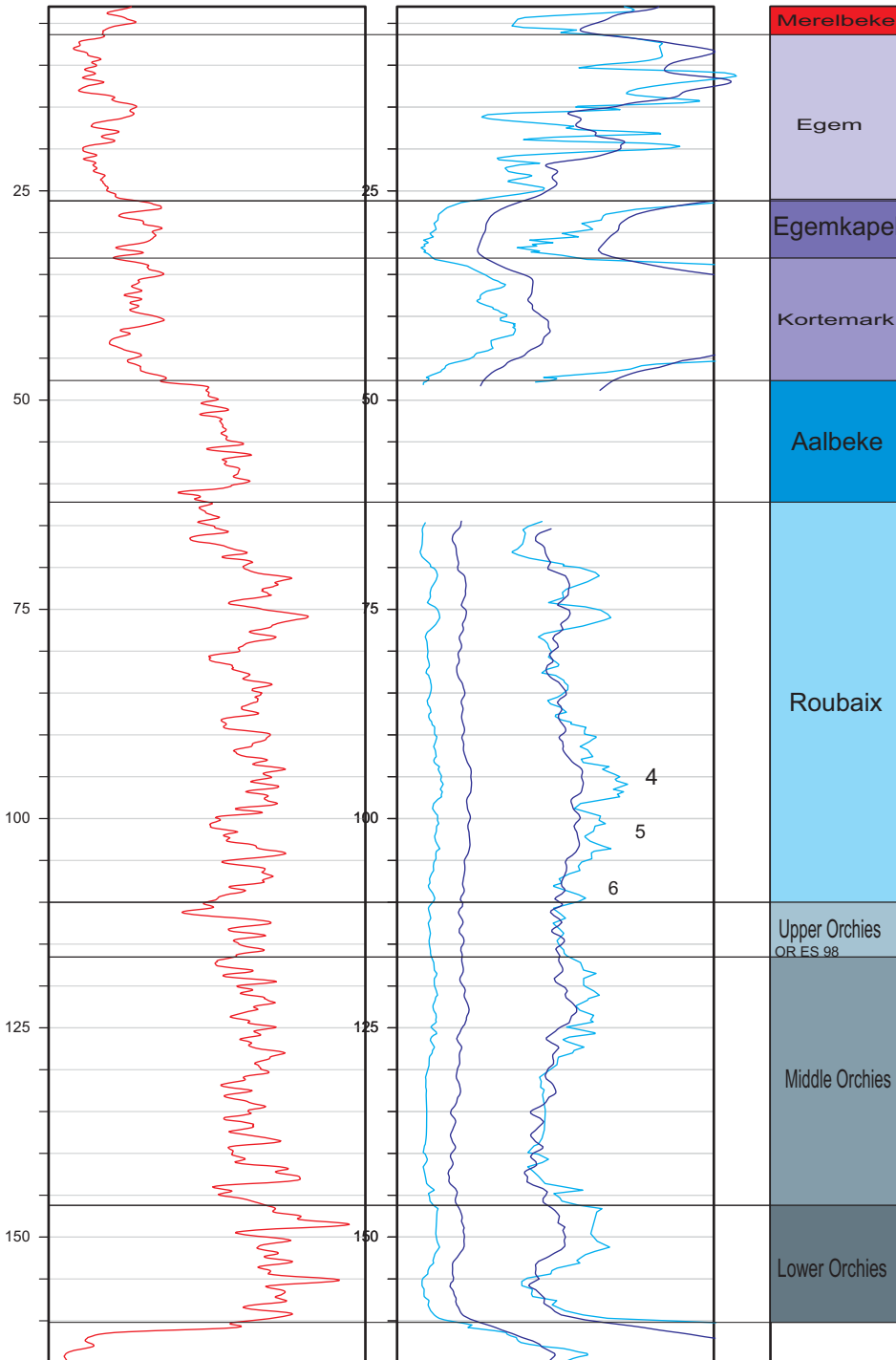
X (Lambert coördinaat) :

Y (Lambert coördinaat) :

Z (m TAW) :

Diepte : m

0	Gamma-ray (cps)	50	0	LN 100 / 200 cm (Ohmm)	300	Stratigrafie
0			0	SN 20 / 40 cm (Ohmm)	300	



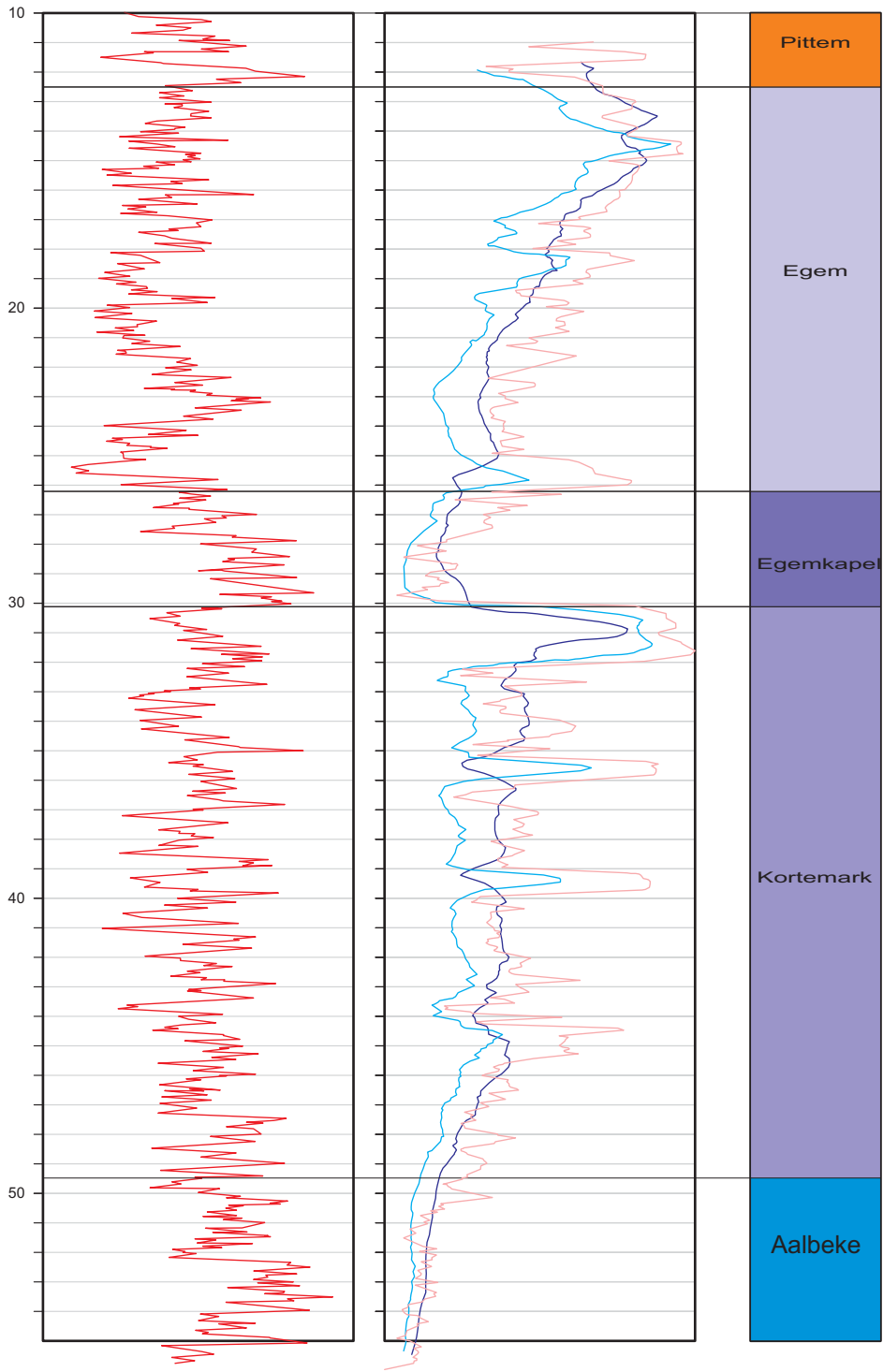


**Locatie : Tielt**

BGD-nummer : 053E0061

Z (m TAW) :

0	Gamma-ray (cps)	50	0	LN 100 / 200 cm (Ohmm)	300	Stratigrafie
0			0	SN 20 / 40 cm (Ohmm)	300	



**Locatie : Pittem**

BGD-nummer : 053W0073

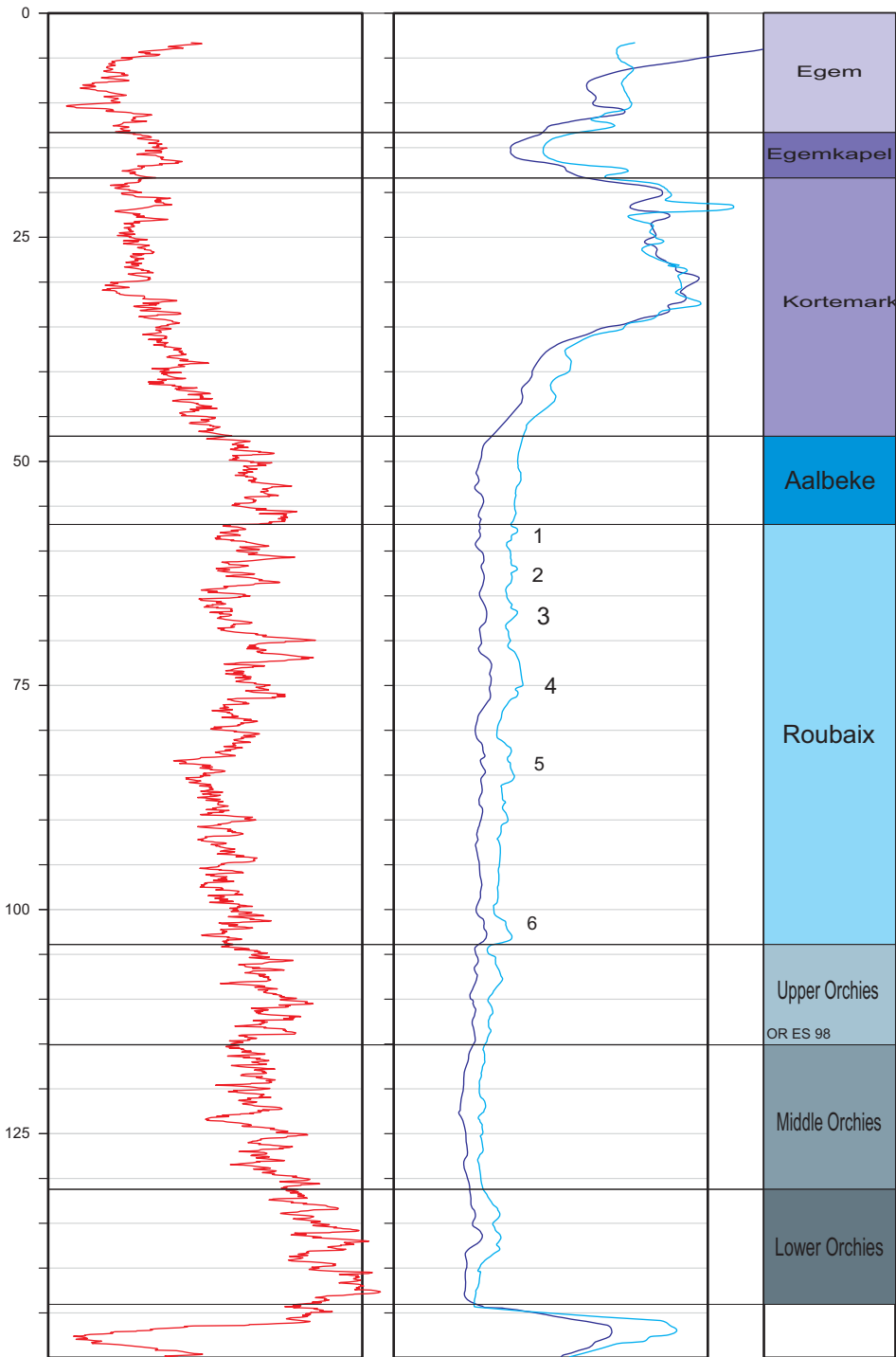
X (Lambert coördinaat) :

Y (Lambert coördinaat) :

Z (m TAW) :

Diepte : m

0    Gamma-ray (cps)    50    0    LN 100 / 200 cm (Ohmm) 300    Stratigrafie  
0    SN 20 / 40 cm (Ohmm) 300



**Locatie : Gent**

BGD-nummer : 055W1020

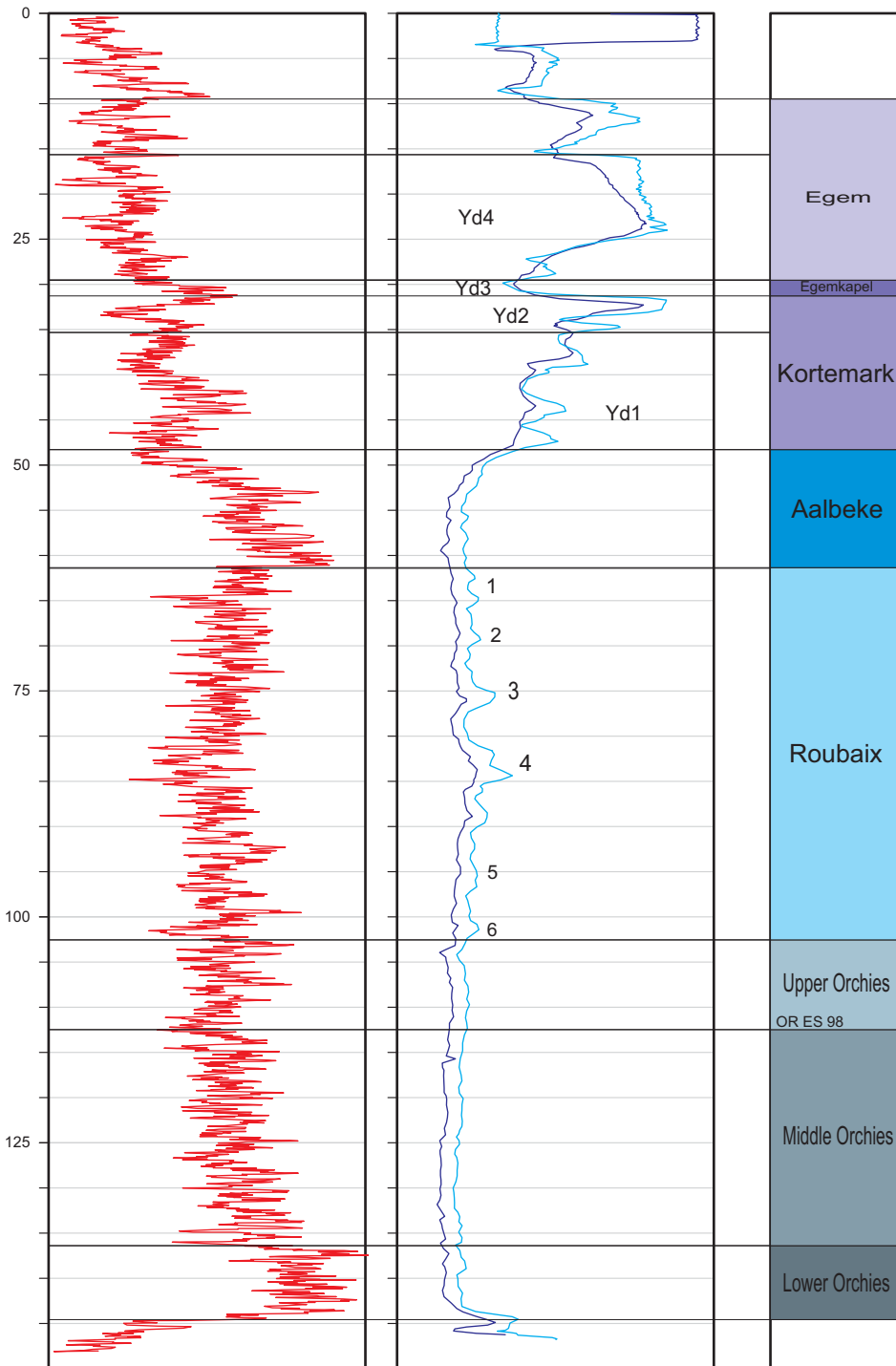
X (Lambert coördinaat) :

Y (Lambert coördinaat) :

Z (m TAW) :

Diepte : m

0	Gamma-ray (cps)	50	0	LN 100 / 200 cm (Ohmm)	300	Stratigrafie
0			0	SN 20 / 40 cm (Ohmm)	300	



**Locatie : Oosterzele**

BGD-nummer : 070E0237

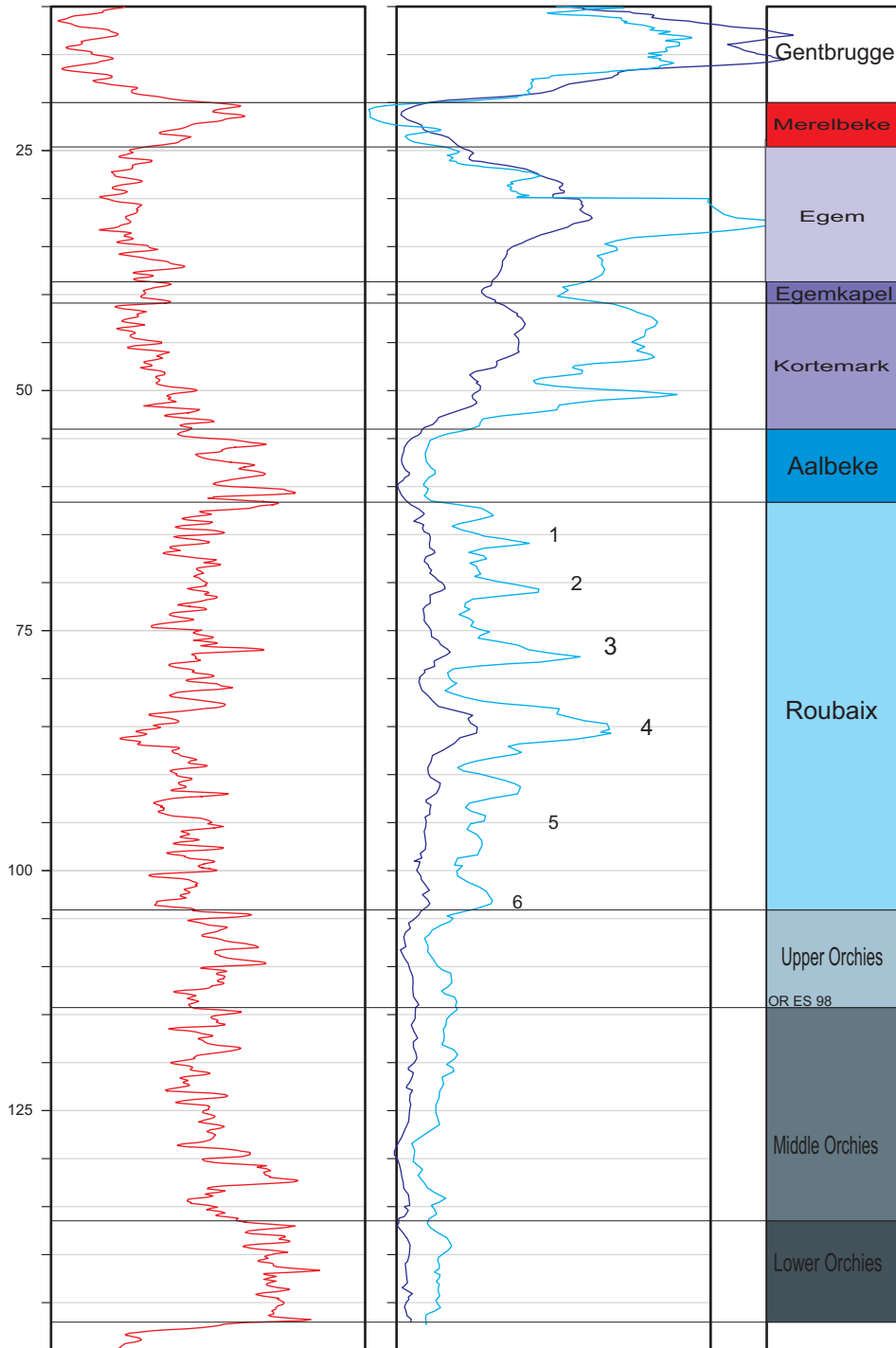
X (Lambert coördinaat) :

Y (Lambert coördinaat) :

Z (m TAW) :

Diepte : m

0      Gamma-ray (cps)      50      0      LN 100 / 200 cm (Ohmm)      300      Stratigrafie  
0      SN 20 / 40 cm (Ohmm)      300



**Locatie : Merchtem**

BGD-nummer : 072E0229

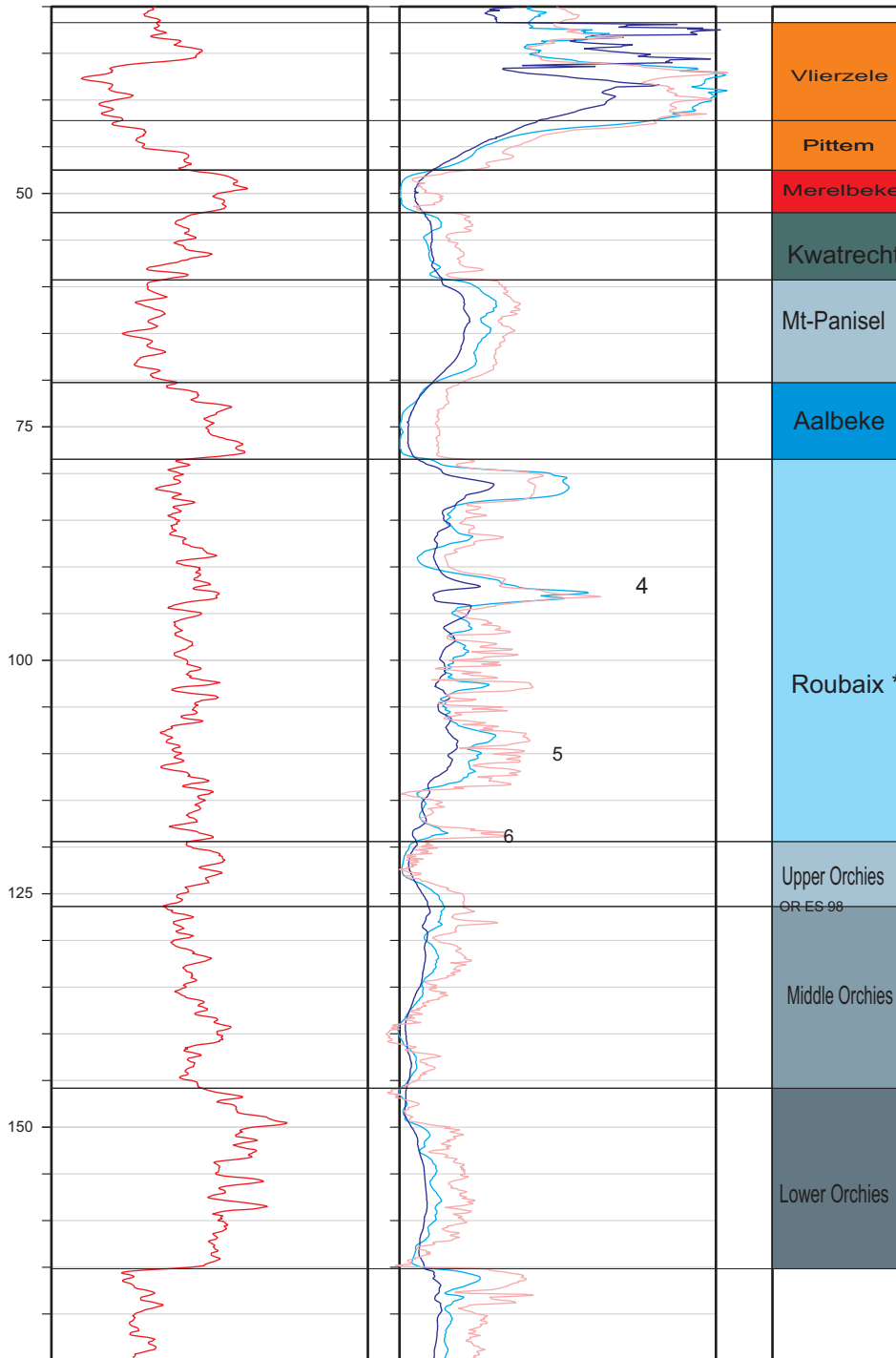
X (Lambert coördinaat) :

Y (Lambert coördinaat) :

Z (m TAW) :

Diepte : m

0      Gamma-ray (cps)      50      0      LN 100 / 200 cm (Ohmm) 300      Stratigrafie  
0      SN 20 / 40 cm (Ohmm) 300



\* transitional to Mons-en-Pévèle

**Locatie : Wieze**

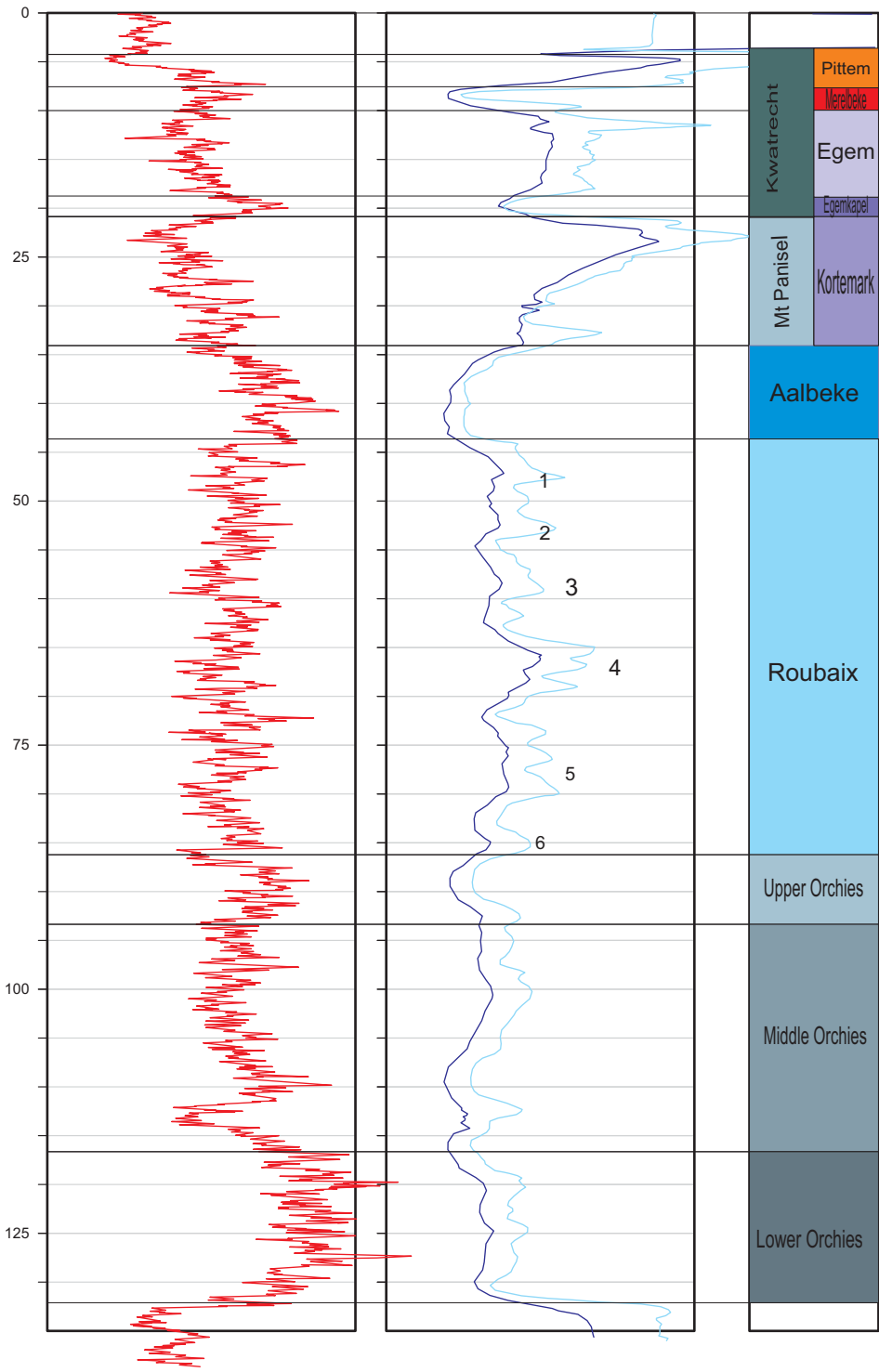
BGD-nummer : 072W0159

X (Lambert coördinaat) :

Y (Lambert coördinaat) :

Z (m TAW) :

Diepte : m

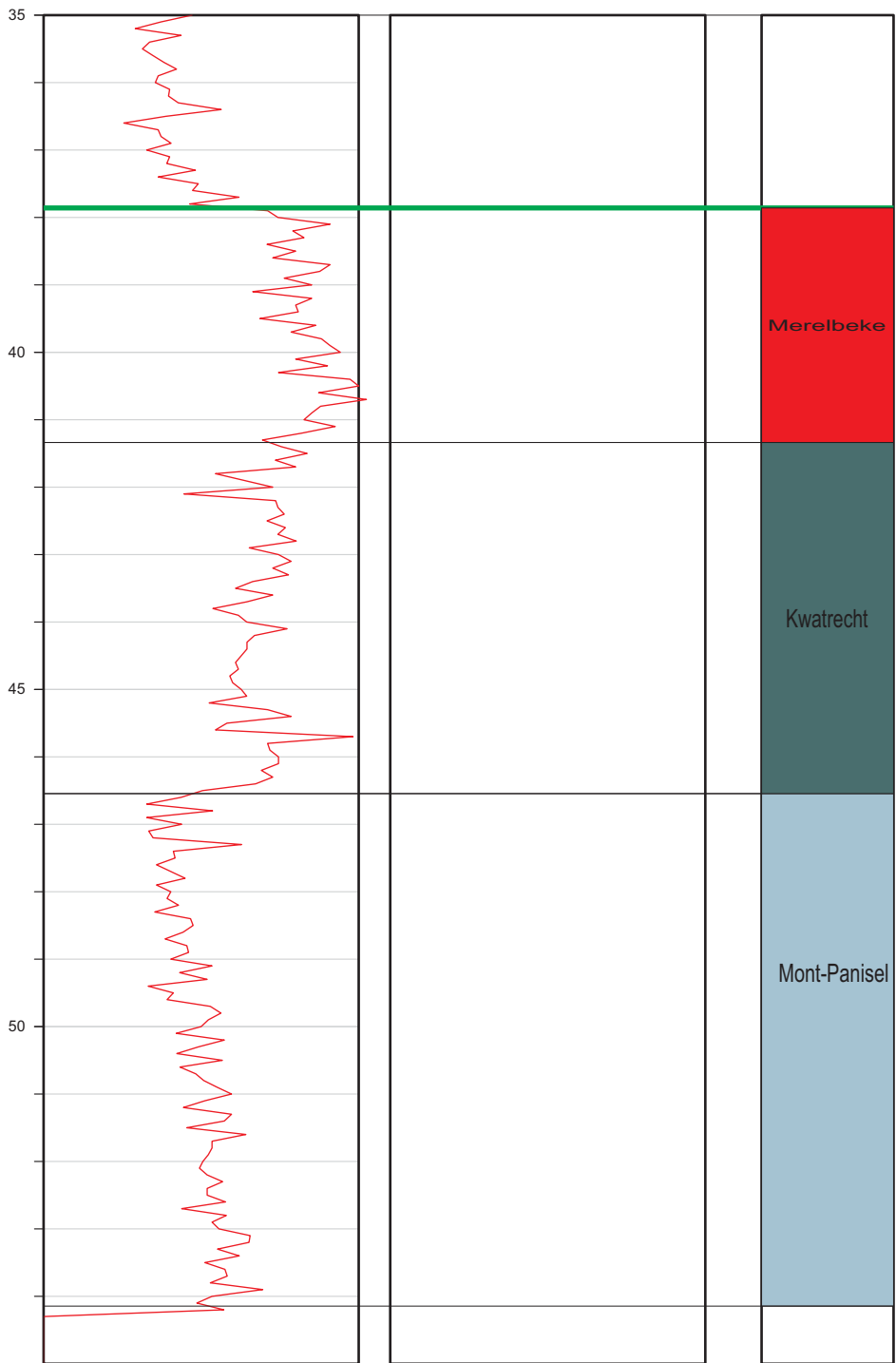


**Locatie : Zemst-Weerde**

BGD-nummer : 073E0359

Z (m TAW) :

0	Gamma-ray (cps)	110	0	LN 100 / 200 cm (Ohmm)	300	Stratigrafie
0			0	SN 20 / 40 cm (Ohmm)	300	



**Locatie : Zemst-Hofstade**

BGD-nummer : 073E0397

X (Lambert coördinaat) :

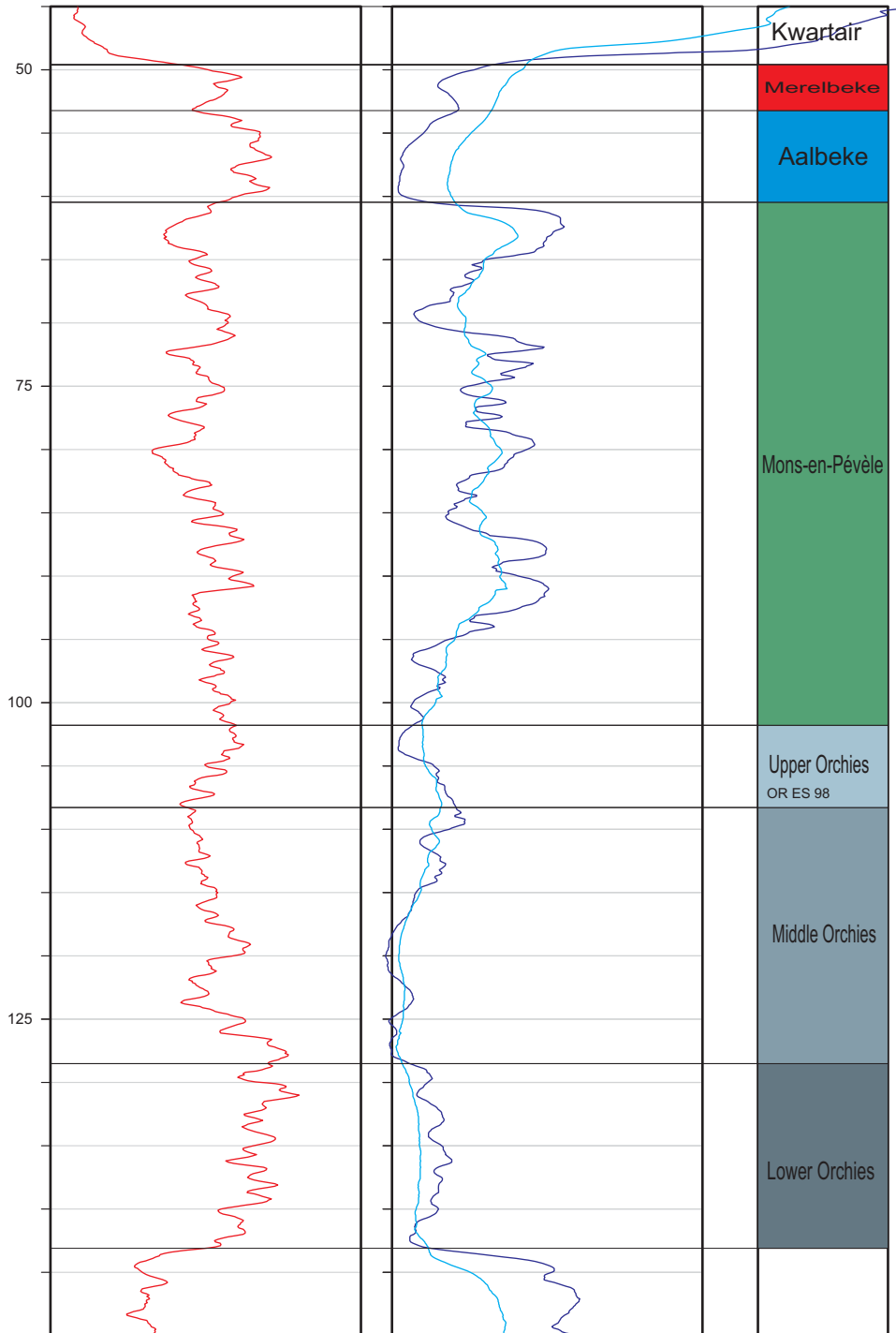
Y (Lambert coördinaat) :

Z (m TAW) :

Diepte : m

0      Gamma-ray (cps)      50      0      LN 100 / 200 cm (Ohmm)      300      Stratigrafie

0      SN 20 / 40 cm (Ohmm)      300





**Locatie : Kruishoutem**

BGD-nummer : 084E1412

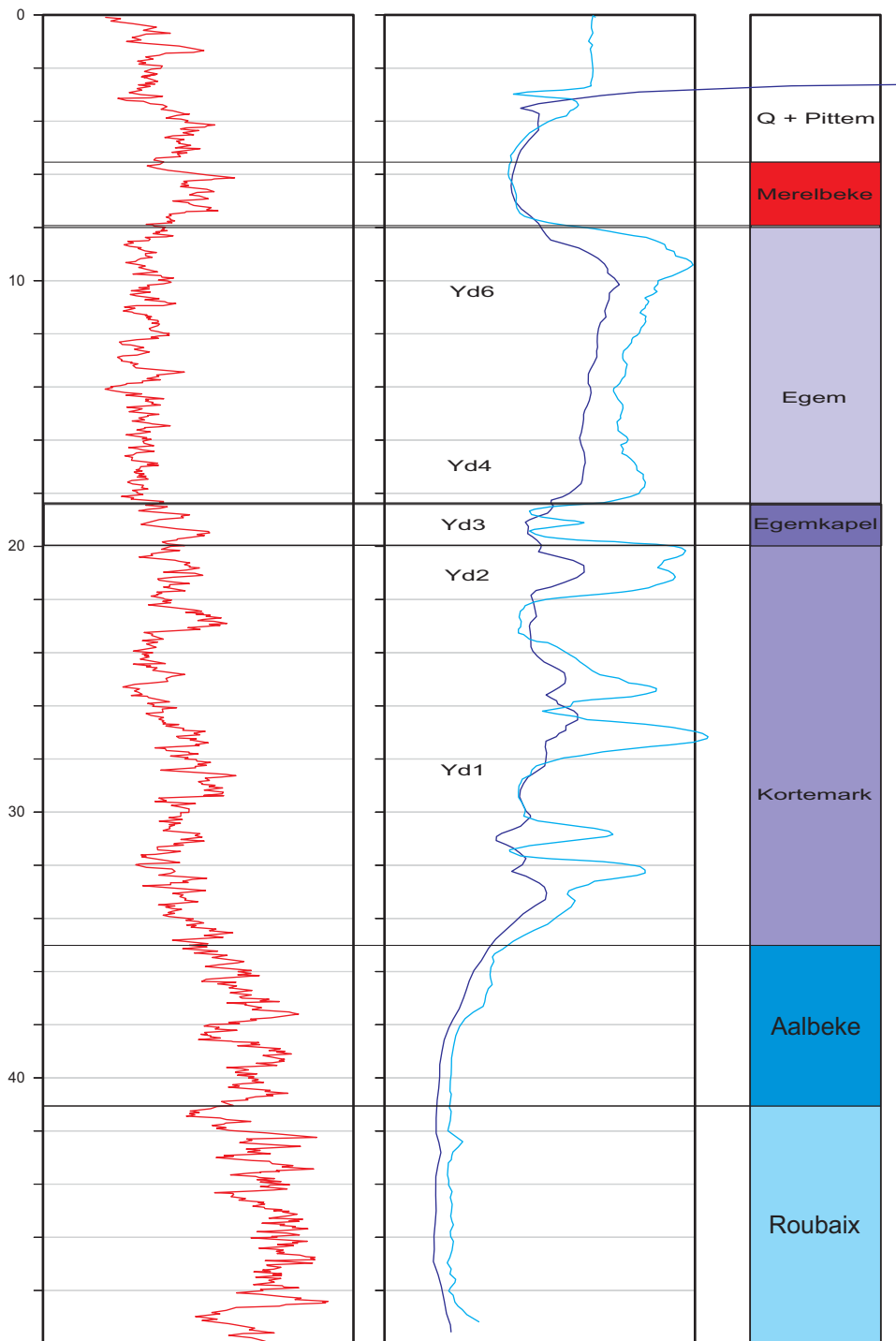
X (Lambert coördinaat) :

Y (Lambert coördinaat) :

Z (m TAW) :

Diepte : m

0      Gamma-ray (cps)      50      0      LN 100 / 200 cm (Ohmm)      300      Stratigrafie  
0      SN 20 / 40 cm (Ohmm)      300



**Locatie : Wortegem**

BGD-nummer : 084W1475

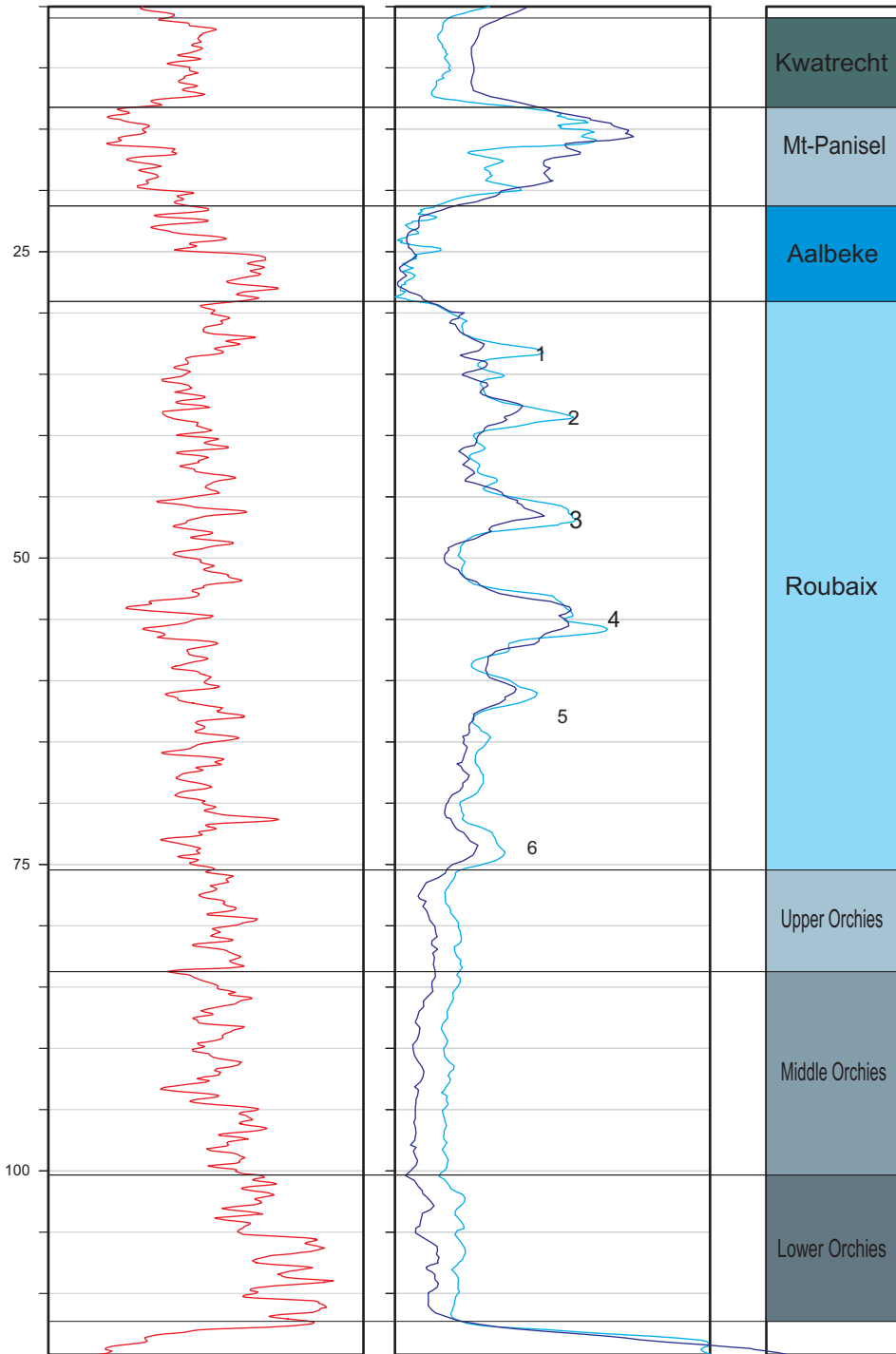
X (Lambert coördinaat) :

Y (Lambert coördinaat) :

Z (m TAW) :

Diepte : m

0	Gamma-ray (cps)	50	0	LN 100 / 200 cm (Ohmm)	300	Stratigrafie
0			0	SN 20 / 40 cm (Ohmm)	300	



**Locatie : Kerksken**

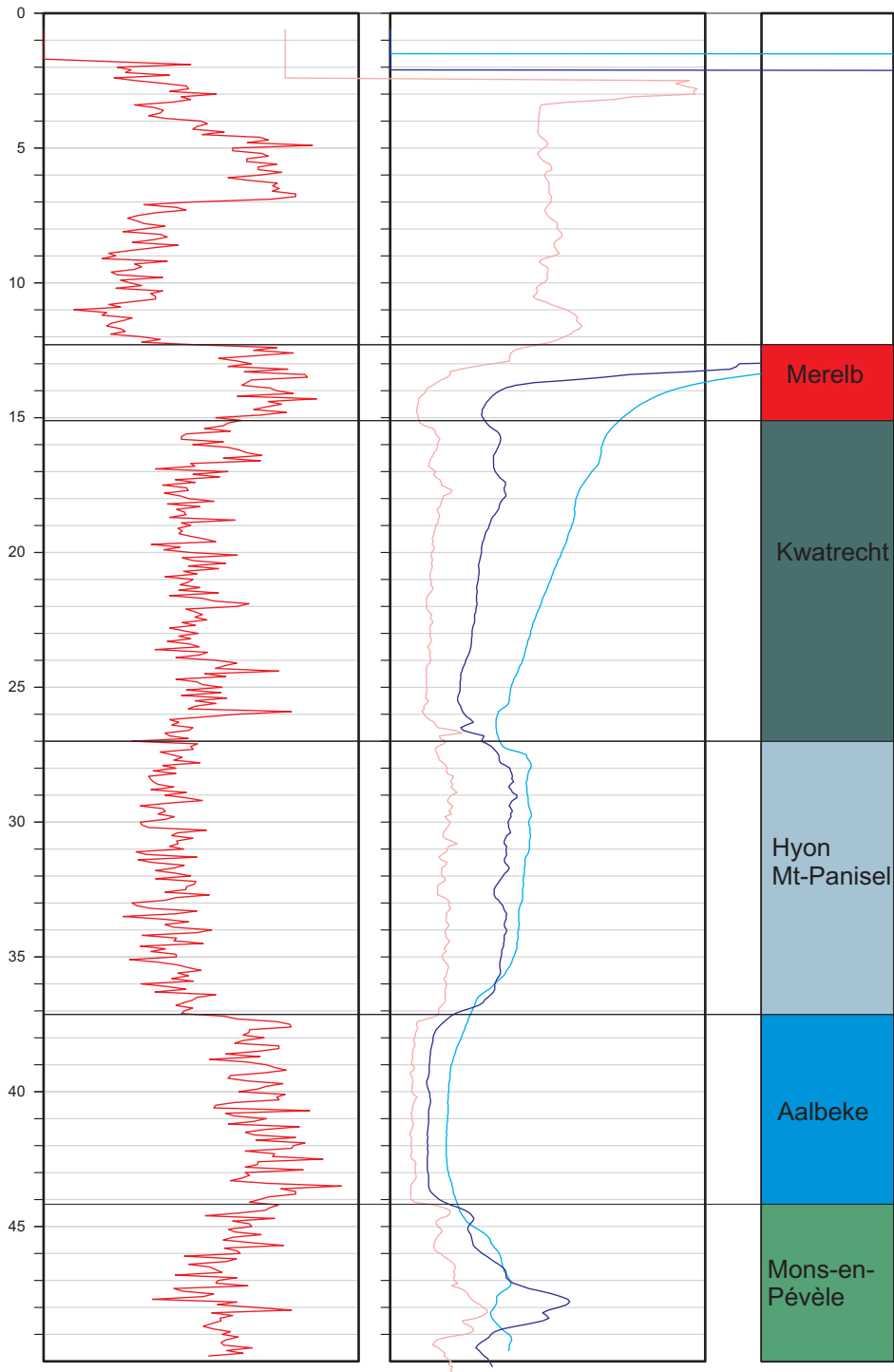
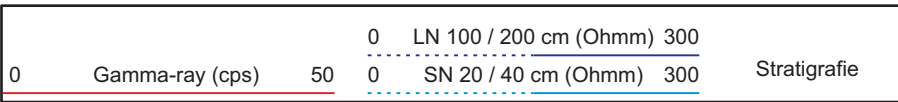
BGD-nummer : 086E0340

X (Lambert coördinaat) :

Y (Lambert coördinaat) :

Z (m TAW) :

Diepte : m



**Locatie :Kester**

BGD-nummer : 101W0079

X (Lambert coördinaat) :

Y (Lambert coördinaat) :

Z (m TAW) :

Diepte : m

0	Gamma-ray (cps)	50	0	LN 100 / 200 cm (Ohmm)	300	Stratigrafie
0			0	SN 20 / 40 cm (Ohmm)	300	

